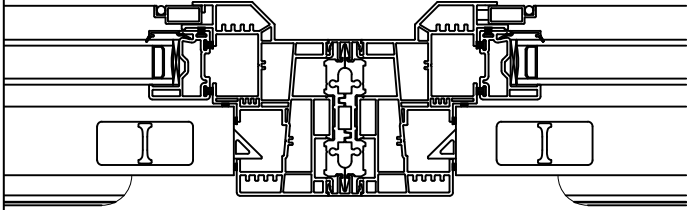
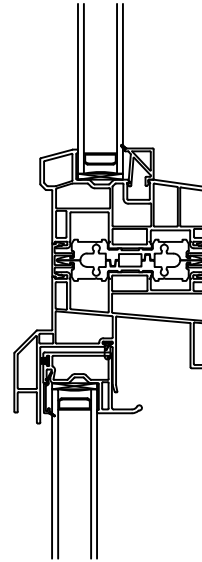


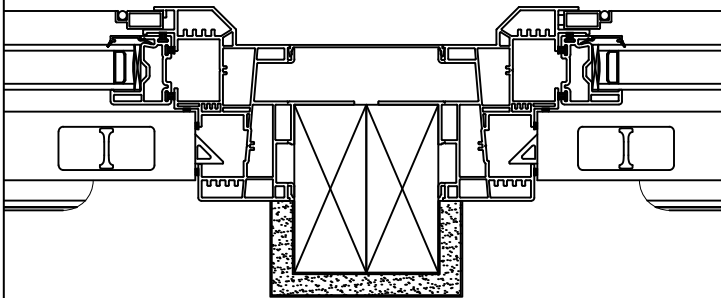
Vertical Standard Mull



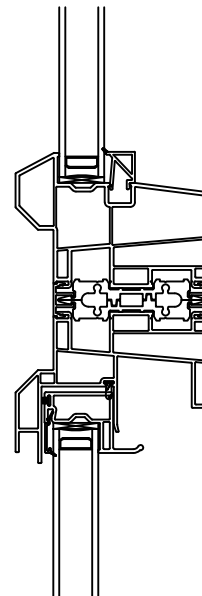
Horizontal Standard Mull to Geometric



3.5" Double Stud Pocket Mull (Field-Applied)



Horizontal Standard Mull to Picture



Cambridge Double Hung
Mull Details

UPDATED BY: RAS

DATE: 12/3/2013

SCALE: 3" = 1'-0"

SECT. 4.1

PAGE: 4