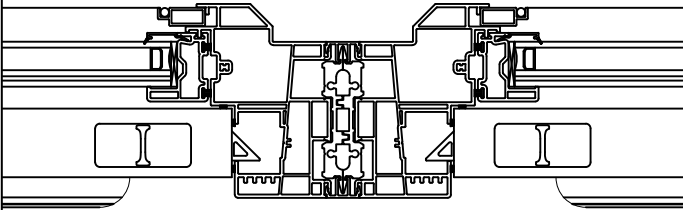
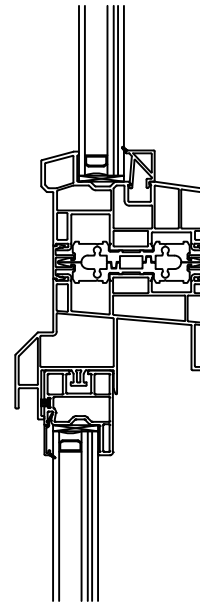


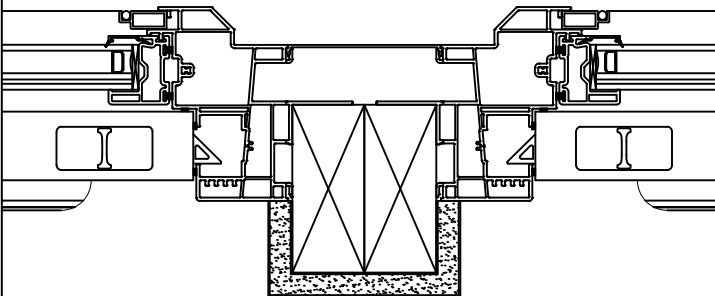
Vertical Standard Mull



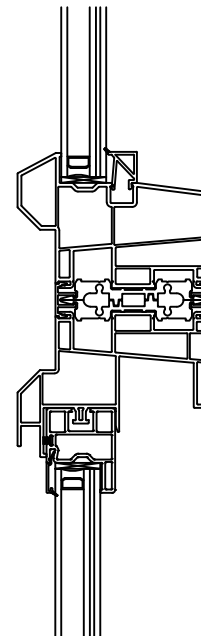
Horizontal Standard Mull to Geometric



3.5" Double Stud Pocket Mull (Field-Applied)



Horizontal Standard Mull to Picture



OceanView Single Hung
Mull Details

UPDATED BY: RAS

DATE: 11/18/2013

SCALE: 3" = 1'-0"

SECT. 2.2

PAGE: 17

THIS DRAWING AND ALL INFORMATION IS THE SOLE PROPERTY OF VIWINCO., INC. MORGANTOWN PA. THE CONTENT IS CONFIDENTIAL AND MUST NOT BE MADE PUBLIC, COPIED, OR USED TO ANY DISADVANTAGE, AND IS SUBJECT TO RETURN ON DEMAND.