

CASEMENT & AWNING WINDOWS

COMPLEMENTARY TO ALL VIWINCO PRODUCT LINES

IMPORTANT:

Always lift vinyl windows at jambs for added safety and prevention of component damage. Do not drag. Stack no more than five windows against each other. Store windows in a near-vertical position; never lay flat. Remove shrink-wrap; store in a cool, shaded area. Extreme heat or direct sunlight may cause uninstalled windows to warp.

CAUTION:

Always use appropriate assistance to lift and place large units so as to avoid possible personal injury or product damage.



P.O. Box 499 • 851 Hemlock Road
Morgantown, PA 19543-0499
Visit us at www.Viwinco.com

4/2021

Install casement or awning windows into an existing wood frame, an opening with frame and sash removed, or into existing metal frames from either inside or outside the home.

- 1 Be sure replacement window dimensions are correct before removing old frames or sashes.
- 2 Place the window in opening to test the fit.
- 3 Check the opening for square and repair any defects before proceeding. The sill of the rough opening must be in continuous level condition to provide support the entire length of the window. Level using a continuous shim or level the sill plate itself. Use wood blocking with existing metal frames.
- 4 Cut and place fiberglass insulation along the length of the head and sill. Insulate old balance pockets in the existing wood frame. Do not overpack or use spray-in type foam unless approved by Viwinco (see Viwinco.com for details).
- 5 Apply a thin bead of sealant to the exposed edge of the exterior blind stop (interior trim, if installation is from exterior).
- 6 Place the new replacement window into the rough opening. Lower the window onto the sill against the stool and center the window. Check and adjust the window for square using a diagonal measurement from the top corners to the opposite bottom corners. Check the sill for level.
- 7 Place the interior of the new replacement window against the sill end of the interior stool. Firmly press the window frame into the sealant on the exposed surface of the exterior blind stop (or interior trim, depending on whether you're installing from inside or outside the home).

8 Using one of the supplied #8 x 2" non-corrosion type pan head screws, fasten one of the upper corners of the hinged jamb to the opening through one of the pre-drilled holes in the frame jamb. Hold the window tightly against the stop while fastening. Shim at each fastener location. Screws must penetrate sub-framing by 1" or greater.

9 Check the window jambs for plumb, the sill for level, and the unit for square.

10 Close an operable sash against the jamb, leaving a small gap. This reveal between the sash and frame jamb should be even. Make adjustments if needed. Check the window jambs for plumb, the sill for level, and the unit for square.

11 Hold the window tightly against the stop (or trim) and secure the hinge frame jamb by placing screws in each of the pre-drilled holes. Check the window again for square and check the reveal. Make adjustments if needed. Fasten the lock jamb and then the head. Shim at each fastener location. In order to prevent the frame from bowing, do not over-tighten screws.

NOTE: If needed, adjustments can be made at the top and bottom of the sash to move the sash slightly to the right or left on the sash arms for improved alignment to the frame sight line. At the sill, 1 snap the sash arm off of the glide track stud, 2 adjust the nut with a 7/16" wrench, and 3 snap the sash arm back onto the glide track stud. Repeat at head.

CAUTION: Do not screw through the sill. This will decrease window performance. Secure with trim or structural adhesive.

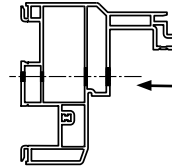
12 Stuff pre-cut strips of fiberglass insulation into the gap around the new replacement window and the rough framing (or the existing frame). Finish with the interior and/or exterior trim.

13 For installations from the interior, apply a continuous bead of high-quality, paintable sealant to the perimeter where the interior trim was removed. Re-install or replace the interior trim.

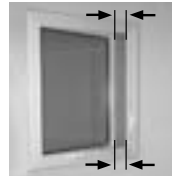
14 With a continuous bead, seal around the exterior perimeter of the replacement window frame where it meets the existing frame.

15 Trim sill angle to fit. To install, snap the sill angle into the groove under the screen pocket. Apply sealant to the bottom and side edges of the sill angle trim.

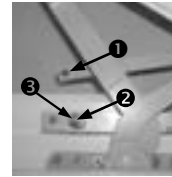
16 Cap the exterior if necessary.



STEP 8



STEP 10



STEP 11



STEP 12



STEP 15 & 16

IMPORTANT: Viwinco will not be responsible for finishing imperfections. Viwinco will not be responsible for damage from unapproved finishes or cleaning chemicals, which may cause adverse reactions to window or door materials. If in doubt, contact your local Viwinco Sales Representative. Unapproved product modifications will void all warranties. Application of after-market window films can cause glass breakage due to thermal stresses. Application of such films will void all glass warranties.

- Seek advice from sealant manufacturer, EIFS manufacturer and EIFS designer when installing any product that penetrates an EIFS structure.
- Check your local building codes before installation. Local building code requirements replace these recommended installation instructions. Improper installation and care may void warranty.

CAUTION: Caustic or abrasive cleaners, silicone-based solvents, petroleum- or silicone-based lubricants, or insecticides on or near frame or sash surfaces may damage or discolor the PVC.

WARNINGS:

- Limited sash stops or nite vents are for convenience only and are not intended to provide security.
- Viwinco window and door insect screens are intended only for insect control. They are not designed as a safety barrier or to restrain children.
- Drilling through window frame or sash for security system installation will decrease window performance.
- Safety glass must be specifically ordered. Broken glass can fragment and cause injury. Many laws and building codes require safety glass to be used under certain conditions.
- The manufacturer assumes no responsibility for failure, damage or injury resulting from inadequate or improper installation, inappropriate product care, or use in applications that exceed product rating. See the product warranty for additional conditions and limitations.

NFRC LABEL